

# Redlands

JEWELLERY EQUIPMENTS

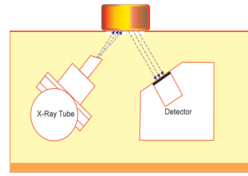


## GOLD PURITY ANALYSER EDX 5000

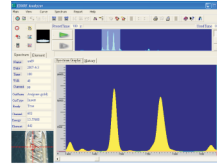


# EDX 5000

## GOLD PURITY ANALYSER



Scanning Area



spectrum

Element	content
Gold	916.80
Copper	41.60
Silver	41.60
Iridium	0.000
Ruthenium	0.000
<b>Karat Value:22.004K</b>	

Result

### How do XRFs work?

Have you wondered why fluorescent colors seem very bright? These colors absorb light for a moment and then utilise this stored light to emit a much brighter color. The process is called fluorescence. Similarly when a (primary) X-ray beam strikes an element, it absorbs the radiation and reflects another (secondary) X-ray. Each element reflects a different X-ray which identifies the element. The XRF's detector registers the radiation emitted by the secondary X-ray and transmits it to the proprietary software which calculates and displays the qualitative and quantitative values. The intensity of radiation indicates the concentration of each element.

### Application Fields

- Retail jewellery
- Quality control in Gold
- Gold refineries
- Iridium detection
- Textiles
- Hallmarking Centers

### Features

- Wide scanning area - 20mm
- No need to focus the sample
- Fast and easy to operate
- Non-Destructive
- Hardly any running cost

### Technical Specifications

X-ray Source	X-ray Tube Ti or W cathode
HV Generator	50Kv adjustable in 200V steps Current adjustable 1μA steps
Detector	Semiconductor Pin diode
Detection Range	Ca(Z=20) to U(Z=92)
Measurement Range	0.1---99.99%
Measurement Time	30---300seconds
Measurement Precision	± 0.07% - In homogeneously melted Sample ( Accuracy levels in comparison with fire assay result only )
Measurement Area	φ20 mm
Working Temperature	15-25°C
Relative Humidity	10-80%
System Requirement	External PC with windows XP
Software	Windows based
Power Requirement	230V , 50Hz
Power Consumption	100W
Machine Dimension	480mm X 460mm X 370mm
Sample Chamber Dimension	260mm X 305mm X 100mm
Weight	35 Kg



P.O.Box. 8742, Sharjah Airport Free Zone  
(SAIF Zone)Sharjah, United Arab Emirates.

Dubai Office : P.O Box : 233473, Industrial Area 4, Dubai, UAE.  
Tel: 00971 4 267 6675, Fax : 00971 4 267 6674  
Mob: 0559021456, Email: xrf@afraprintequip.com  
Web: www.afraprintequip.com

AGENTS FOR :  
U.A.E, BAHRAIN, OMAN, QATAR, KUWAIT, SAUDI ARABIA,  
SYRIA, JORDAN, INDIA, NEPAL, SRILANKA